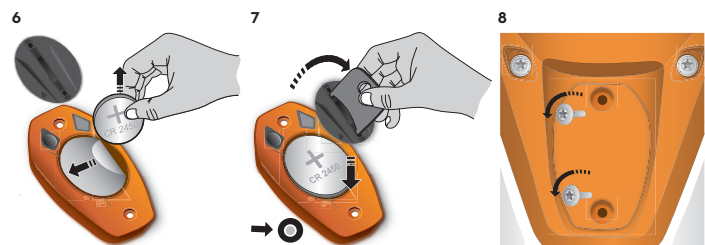
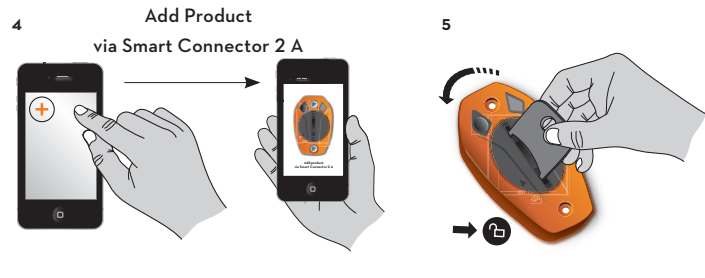


STIHL CONNECTED



Cleaning and Storage

WARNING

- Reduce the risk of short circuit:
 - Keep the Smart Connector free of foreign matter.
 - Clean with a dry cloth or soft, dry brush.
 - Never clean with detergents or solvents, which may damage the polymer housing.
 - Never spray with a pressure washer or otherwise spray with water or other liquids.
- Improper storage can lead to unauthorized use, damage to the Smart Connector and the power tool it's connected to, and increase the risk of personal injury and property damage.
 - Store indoors in a dry, secure place that is inaccessible to children and other unauthorized users.

4 Connecting to the STIHL connected App

- Download the STIHL connected App from Google Play or the App Store (**Illustration 1**).
- Follow in-app instructions for creating a new user account (**Illustration 2**). Returning users should log in using their existing account information (**Illustration 3**).
- Follow the step-by-step instructions for adding a product to your product list (**Illustration 4**).

5 Installing the Battery

The STIHL Smart Connector is powered by a CR2450 button-cell battery. Never attempt to use any other type of battery.

WARNING

Chemical burn hazard. Keep battery away from children.

WARNING

This product contains a lithium button/coin cell battery. If a new or used button/coin cell battery is swallowed or enters the body, it can cause severe internal burns and can lead to death in as little as 2 hours. Always completely secure the

battery compartment. If the battery compartment does not close securely, stop using the product, remove the battery, and keep it away from children. If you think batteries might have been swallowed or placed inside any part of the body, seek immediate medical attention.

To install the battery in the Smart Connector:

- Using the tool provided, turn the Smart Connector cover counter-clockwise to the unlocked position (**Illustration 5**).
- Remove the cover (**Illustration 6**).
- Remove the battery (**Illustration 6**).
- Remove and discard the protective battery foil (**Illustration 6**).
- Install the battery with the polarity (+) pointing upwards (**Illustration 7**).
- Replace the cover (**Illustration 7**).
- Using the tool provided, turn the cover clockwise to the locked position (**Illustration 7**).

6 Mounting Instructions

Mounting the Smart Connector 2 A

The Smart Connector 2 A can be mounted to compatible STIHL power tools. Compatible tools have a mounting recess designed specifically for the Smart Connector 2 A.

To mount the Smart Connector:

- Remove the screws from the mounting recess of the power tool (**Illustration 8**). The screws will be reused for mounting the Smart Connector.
- Disconnect the dummy plug and remove it (**Illustration 9**).
- Connect the Smart Connector plug to the power tool (**Illustration 10**).
- Position the plug inside the recess of the power tool (**Illustration 11**).
- Insert the Smart Connector 2 A into the recess (**Illustration 12**). Take care not to pinch or otherwise damage any cables.
- Insert the screws and fasten the Smart Connector 2 A securely to the power tool (**Illustration 12**).

1 Introduction

Thank you for your purchase. The information contained in this manual will help you receive maximum performance and satisfaction from your STIHL product and, if followed, reduce the risk of injury from its use.

The STIHL Smart Connector 2 A allows you to track runtime and other information about compatible STIHL power tools, which can be synchronized with the STIHL connected Portal through the STIHL connected App. When the Smart Connector is within Bluetooth® range of a smartphone or tablet running the STIHL connected App, you can also track the location and status of a connected product using GPS data of your mobile device.

It is important that you read and observe the following information and warnings. Improper use can cause serious injury.

Read this instruction manual and the instruction manual for your STIHL power tool thoroughly before use and periodically thereafter. Careless or improper use of the STIHL Smart Connector can cause serious or fatal injury.

For further information, or if you do not understand any of the instructions in this manual, please go to www.stihlusa.com or contact your authorized STIHL servicing dealer.

Additional assistance can be found on the STIHL connected App.

This manual contains safety information that requires your special attention. Such information is introduced with the safety alert symbol and the following signal word:

WARNING

Indicates a hazardous situation that, if not avoided, could result in death or serious injury.

SAVE THESE INSTRUCTIONS!

7 Linking to the STIHL connected App

Linking the Smart Connector 2 A to the STIHL connected App

- After the battery is installed and the Smart Connector 2 A is mounted, start the power tool as instructed in your power tool manual.
- Follow the instructions on your smartphone or tablet to link the Smart Connector 2 A to the STIHL connected App (**Illustration 13**).

8 During Operation

Once you have linked your STIHL connected App account to your STIHL Smart Connector 2 A, you will be prompted for information to help you track your equipment.

Once the Smart Connector 2 A is attached to a STIHL power tool and the tool is switched on, the Smart Connector will start tracking runtime and other data, which will be submitted to the STIHL connected App when the smartphone or tablet is in range.

Bluetooth® and location services must be enabled on your mobile device to enable tracking features.

The Smart Connector's signal range may vary depending on ambient conditions and the performance of the smartphone or tablet. The Bluetooth® range may be limited when the signal is transmitted through metallic barriers (e.g., walls, shelving units, etc.) or near strong electromagnetic fields.

For more information on the STIHL connected App, please visit www.stihlusa.com or view the Help tab inside the app. Separate terms and conditions apply to the use of the STIHL connected App and are available for review in the app.

9 Troubleshooting Guide

Condition:

The LED does not glow when the battery is inserted.

- Cause:** Battery is fully depleted or the battery is inserted the wrong way (reversed polarity).

- Remedy:** Replace the battery or place the battery with the side (+) pointing upwards.

2 Main Parts



3 Important Safety Instructions

Battery

WARNING

- Read all safety warnings and instructions. Failure to follow the warnings and instructions may result in electric shock, fire and/or serious injury.
- Use the STIHL Smart Connector only as described in these instructions and the STIHL connected App.
- Your STIHL Smart Connector is designed for use only with a properly inserted CR2450 button cell battery. Do not attempt to use another button cell or electrical power supply.
- Use with an unauthorized battery can result in fire, explosion, or leakage of battery fluid.
- Swallowing or ingesting the button cell battery can cause serious internal chemical burns which may lead to death in less than 2 hours.



- Always secure the battery compartment.
- Keep battery away from children.
- If you think a battery has been swallowed, seek emergency medical attention immediately. Do not induce vomiting.

- Ensure the battery compartment on the STIHL Connector is closed securely.
 - If the compartment will not remain closed, remove the battery and discontinue use. Properly dispose of the battery and replace the Smart Connector.
- Risk of fire and explosion
 - Never attempt to re-charge the battery.
 - Never heat the battery above 212 °F (100 °C) or place it in or near fires, stoves or other high-temperature locations.
 - Do not crush or expose to microwaves.

- High temperatures may cause the battery to generate heat, rupture, leak, ignite or explode.
 - Use and store the battery only within an ambient temperature range of -20 °F to 140 °F (-30 °C to 60 °C).
 - Never store the battery inside a vehicle in hot weather.
- Risk of short circuit, which could lead to rupture, fire or explosion.
 - Keep the battery dry.
 - Never stack batteries.
 - Never bridge the terminals with wires or with paper clips, coins, keys, nails or other metallic objects that can make a connection from one terminal to another.
 - Never carry the battery in your pocket.

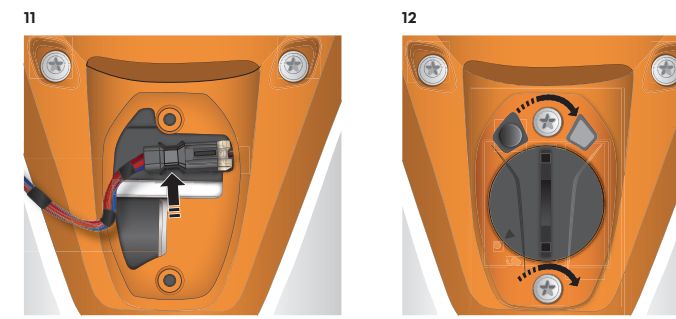
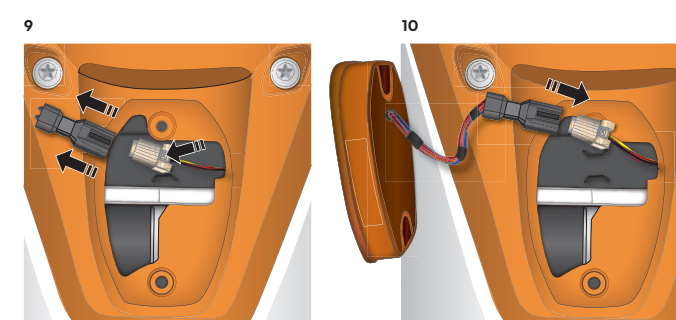
- Leaking battery fluid can cause skin and eye irritation or chemical burns.
 - Never attempt to open or dis-assemble the battery. In the event of leakage, avoid contact with skin and eyes.
 - Clean up spilled fluid with an inert absorbent such as sand or an absorbent cloth.
- Avoid skin and eye contact with battery fluid. Avoid vapor generated from leaking or burning batteries.

- Rinse affected skin thoroughly with mild soap and water.
- Flush eyes with clean water for 15 minutes without rubbing.
- Seek medical attention.
- Handle discharged/depleted batteries carefully.
 - Keep away from children.
 - Properly dispose of batteries immediately at the end of their useful life. Never dispose of batteries with household waste.
 - Observe all federal, state and local disposal rules and regulations.
 - California: Perchlorate material - special handling may apply, see www.dtscc.ca.gov/hazardouswaste/perchlorate

Mounting and Operation

WARNING

- Before mounting, read and follow all warnings and safety instructions provided with the STIHL power tool.
- Mount the Smart Connector 2 A as specified in these instructions and the manual for your compatible STIHL power tool. Installation information is also found in the STIHL connected App.
- The Smart Connector 2 A is designed for use only with STIHL products having a dedicated mounting recess. (See power tool instruction manual or the STIHL connected App for compatibility information.)
- Mount the Smart Connector 2 A only in the specially designed mounting recess of compatible STIHL power tools. Never mount to non-STIHL products. Never mount to STIHL products designed without a mounting recess.



© ANDREAS STIHL AG & Co. KG, 0457 399 0027 A J20



11 FCC 15 Compliance Statement

This device (FCC ID: 2ALP85C2A) complies with part 15 of the FCC Rules.

Operation is subject to the following two conditions:

- this device may not cause harmful interference.
- this device must accept any interference received, including interference that may cause undesired operation.

Note: This equipment has been tested and found to comply with the limits for a Class B digital device, pursuant to part 15 of the FCC Rules. These limits are designed to provide reasonable protection against harmful interference in a residential installation. This equipment generates, uses and can radiate radio frequency energy and, if not installed and used in accordance with the instructions, may cause harmful interference to radio communications. However, there is no guarantee that interference will not occur in a particular installation.

If this equipment does cause harmful interference to radio or television reception, which can be determined by turning the equipment off and on, the user is encouraged to try to correct the interference by one or more of the following measures:

- reorient or relocate the receiving antenna,
- increase the separation between the equipment and receiver,
- connect the equipment to an outlet on a circuit different from that to which the receiver is connected,
- consult an authorized STIHL servicing dealer or an experienced radio/TV technician for help.

Do not change or modify this product in any way unless specifically allowed in this manual, since this could void your authority to operate it.

12 Limited Warranty

STIHL Incorporated Limited Warranty Policy

This product is sold subject to the STIHL Incorporated Limited Warranty Policy, available at www.stihlusa.com/warranty.html. It can also be obtained from your authorized STIHL dealer or by calling 1-800-GO-STIHL (1-800-467-8445).

13 Addresses

STIHL Incorporated
536 Viking Drive
P.O. Box 2015
Virginia Beach, VA
23452-2015

WARNING

This product contains chemicals known to the State of California to cause cancer, birth defects or other reproductive harm.

Apple and the Apple logo are trademarks of Apple Inc., registered in the U.S. and other countries. App Store is a service mark of Apple Inc. Google Play and the Google Play logo are trademarks of Google Inc.

This instruction manual is protected by copyright. All rights reserved, especially the rights to reproduce, translate and process with electronic systems.

